



CITY OF SAN ANTONIO
METROPOLITAN HEALTH DISTRICT

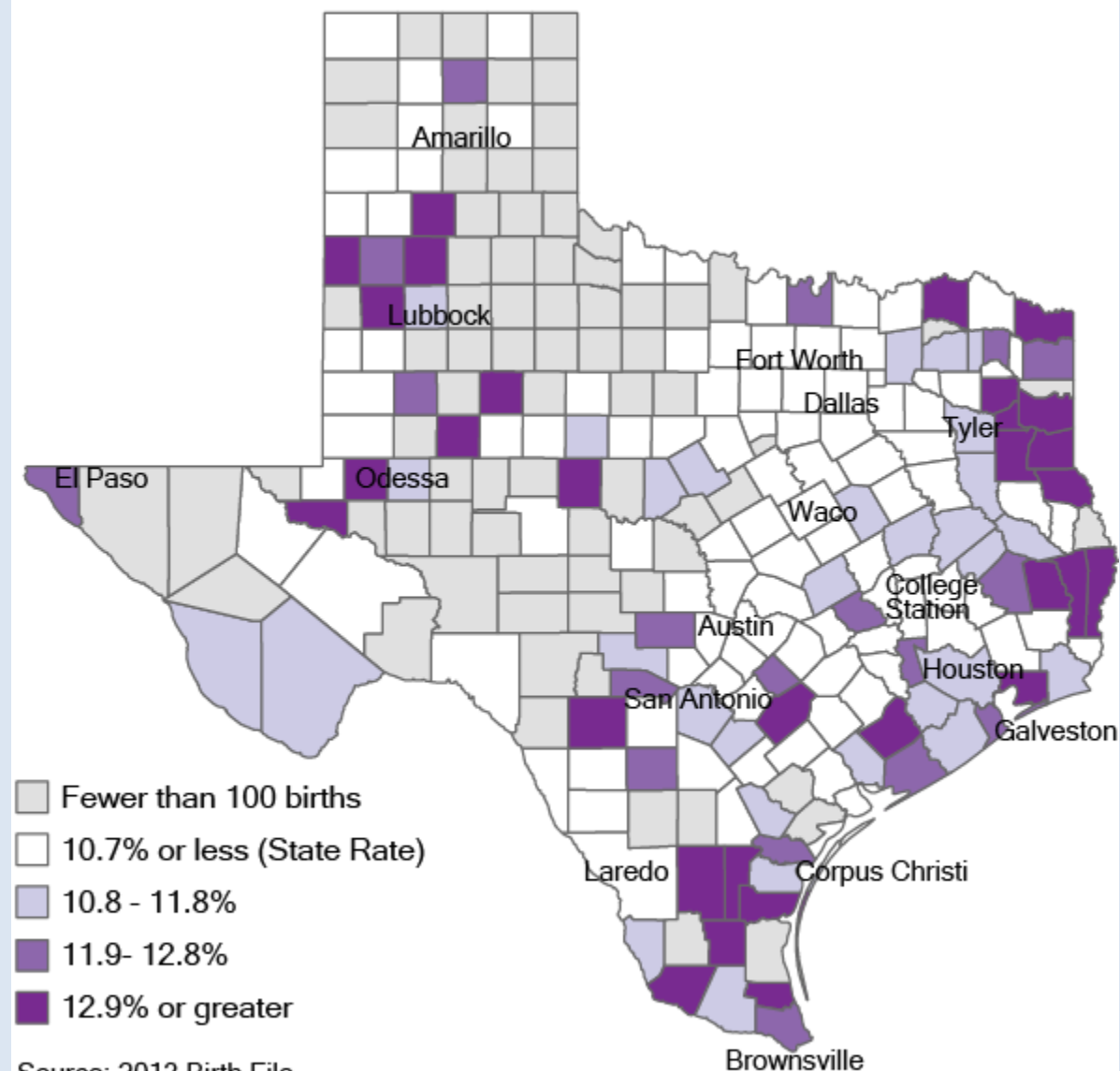
The State of Prematurity In San Antonio

C. Junda Woo, MD, MPH
Medical Director, Metro Health
Nov. 4, 2016

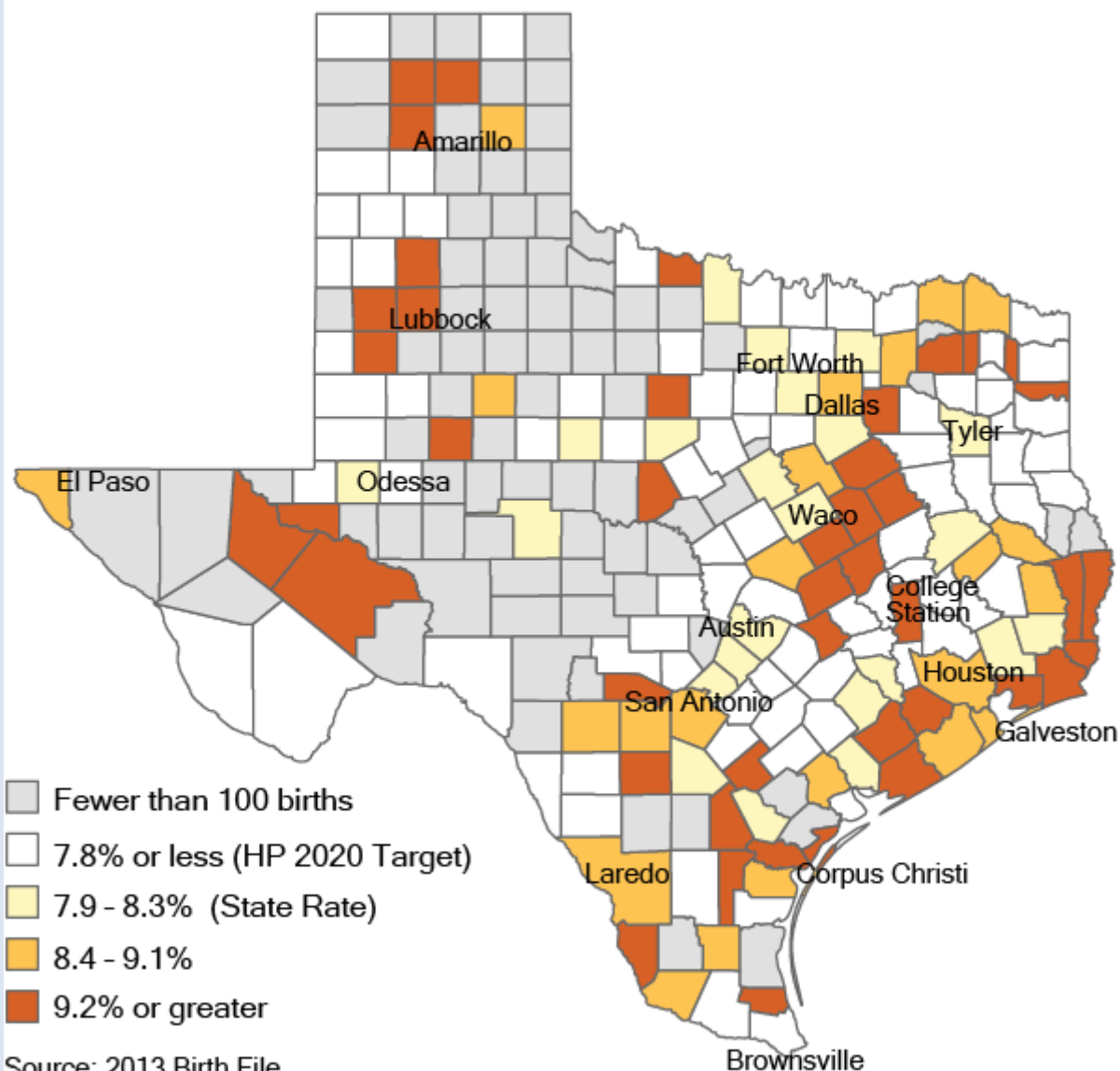
Objectives

- Discuss trends of preterm births in Bexar County
- Describe demographic characteristics of women who experienced preterm births
- Discuss trends in infant mortality in Bexar County

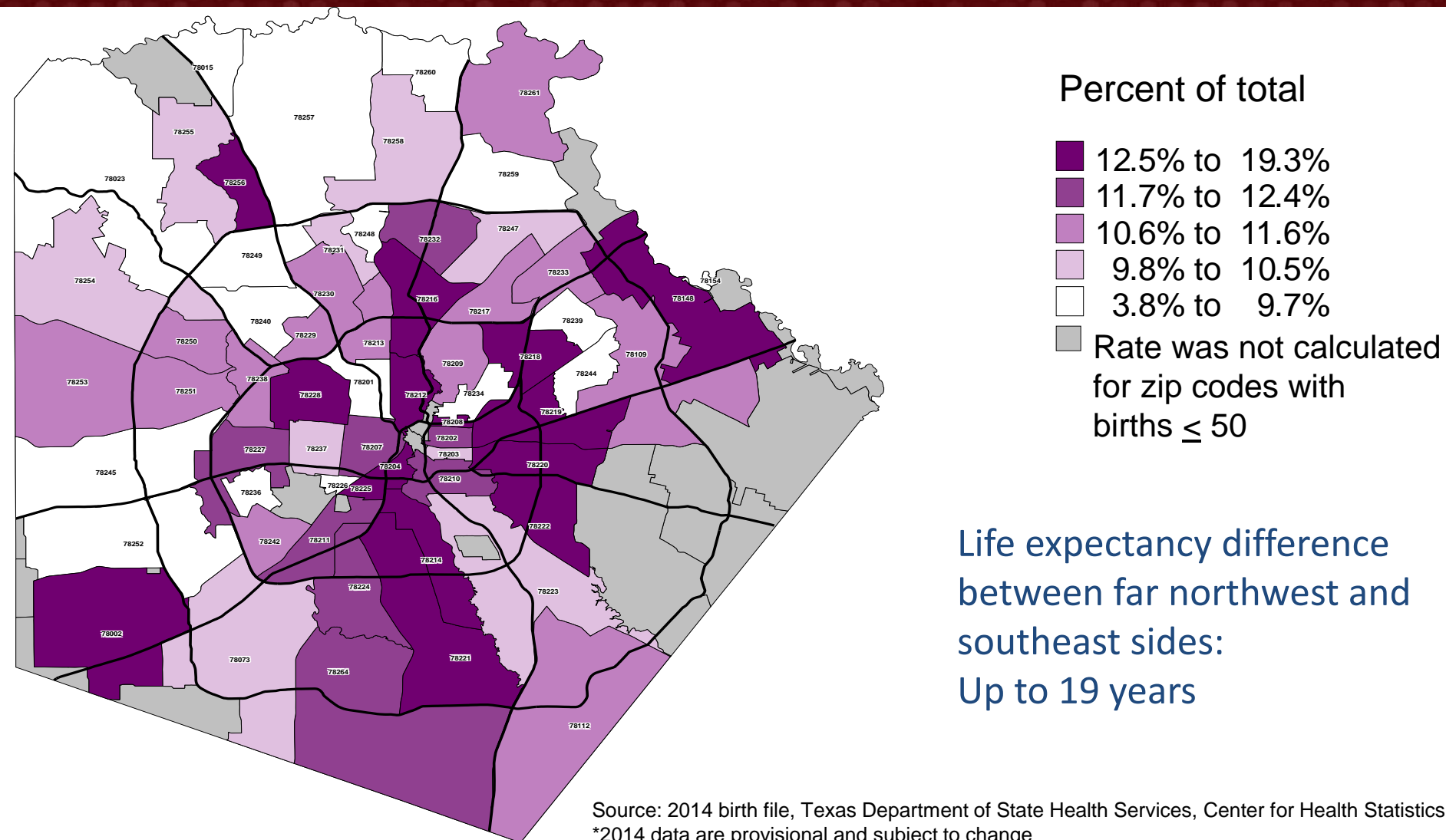
Percent of Live Births that Were Preterm (less than 37 weeks) Using Obstetric Estimate of Gestation, 2013



Percent of Infants Born Low Birth Weight (less than 2500g), 2013

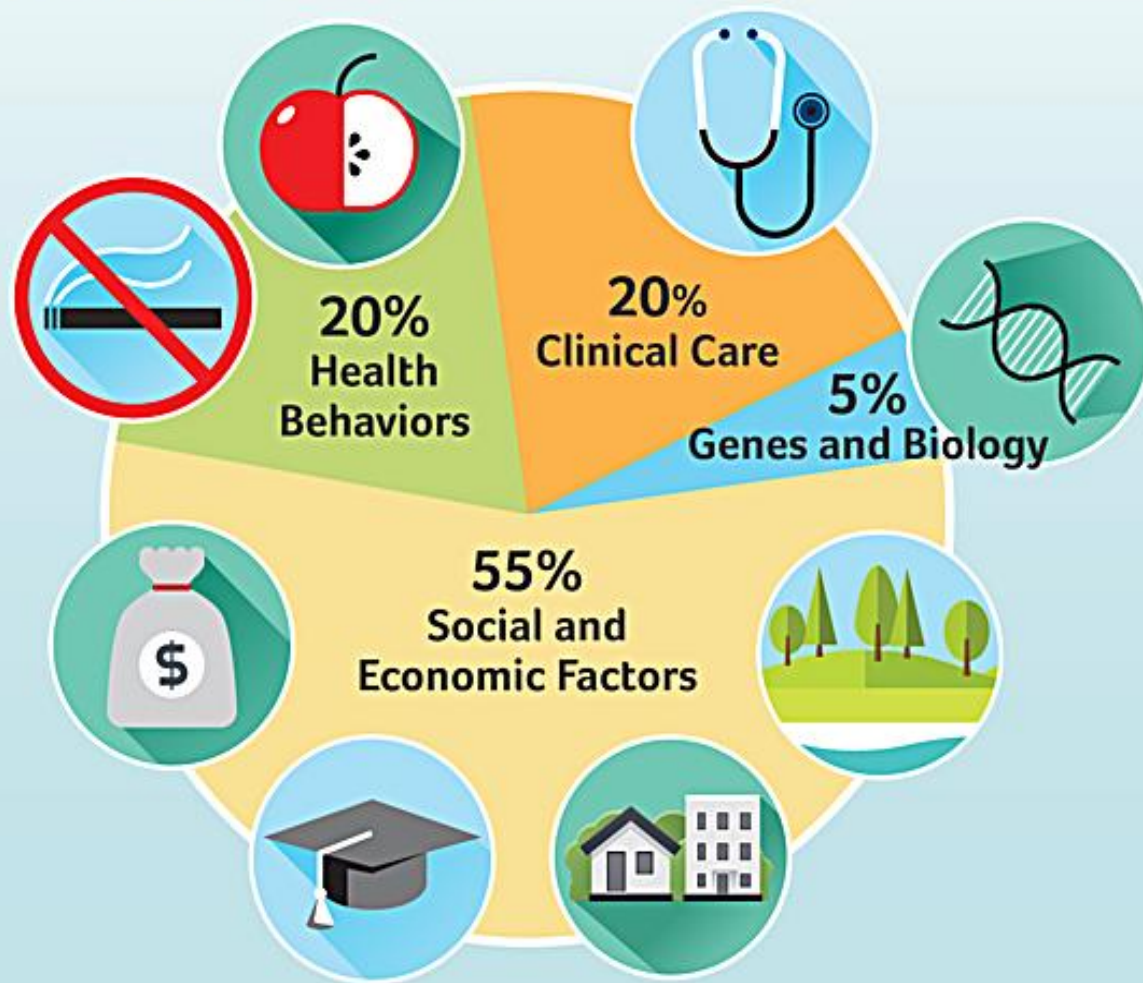


Percent of Preterm Births by Zip Code, Bexar County, 2014*



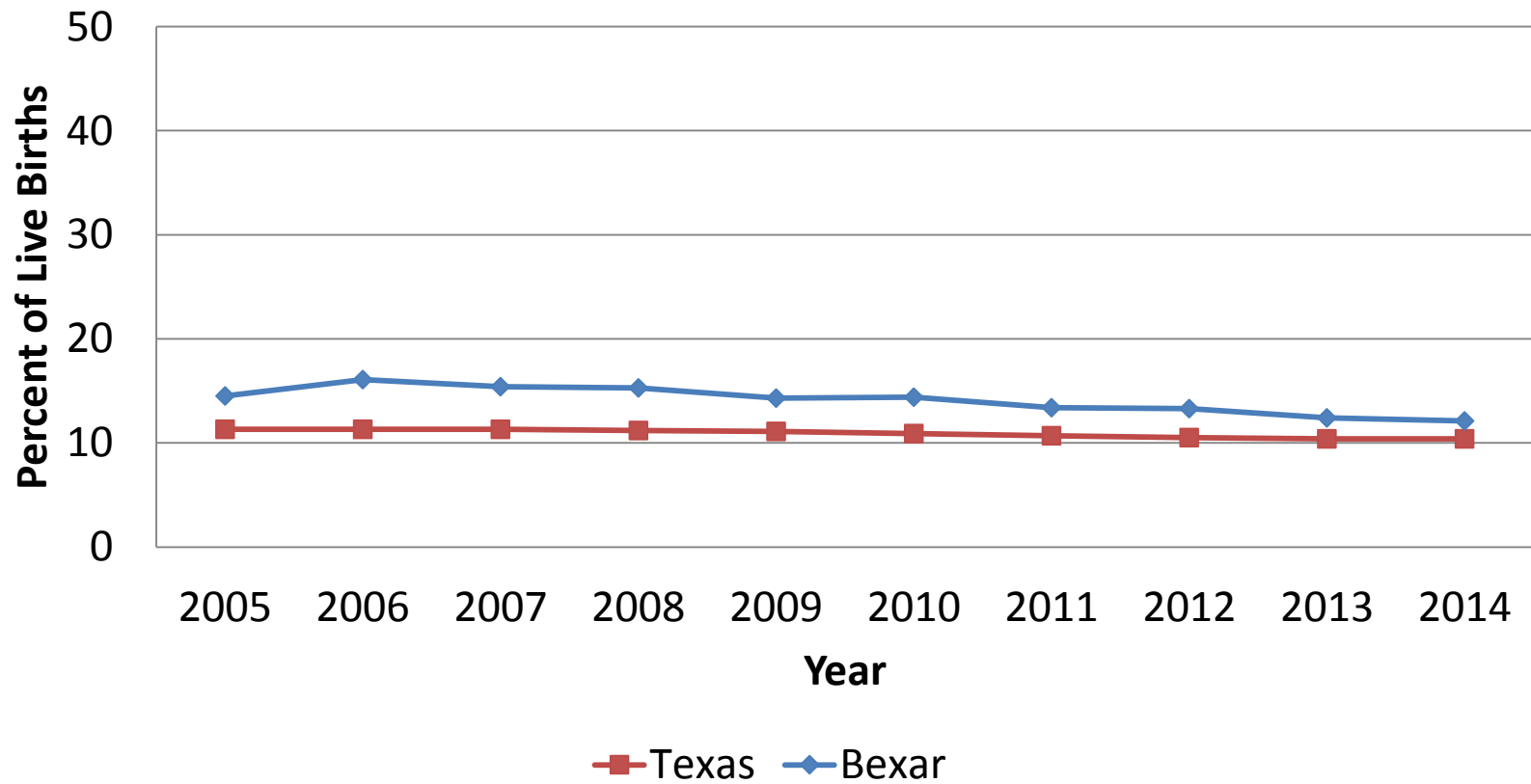
Health starts where we live, learn, work and play.

WHAT MAKES US HEALTHY?

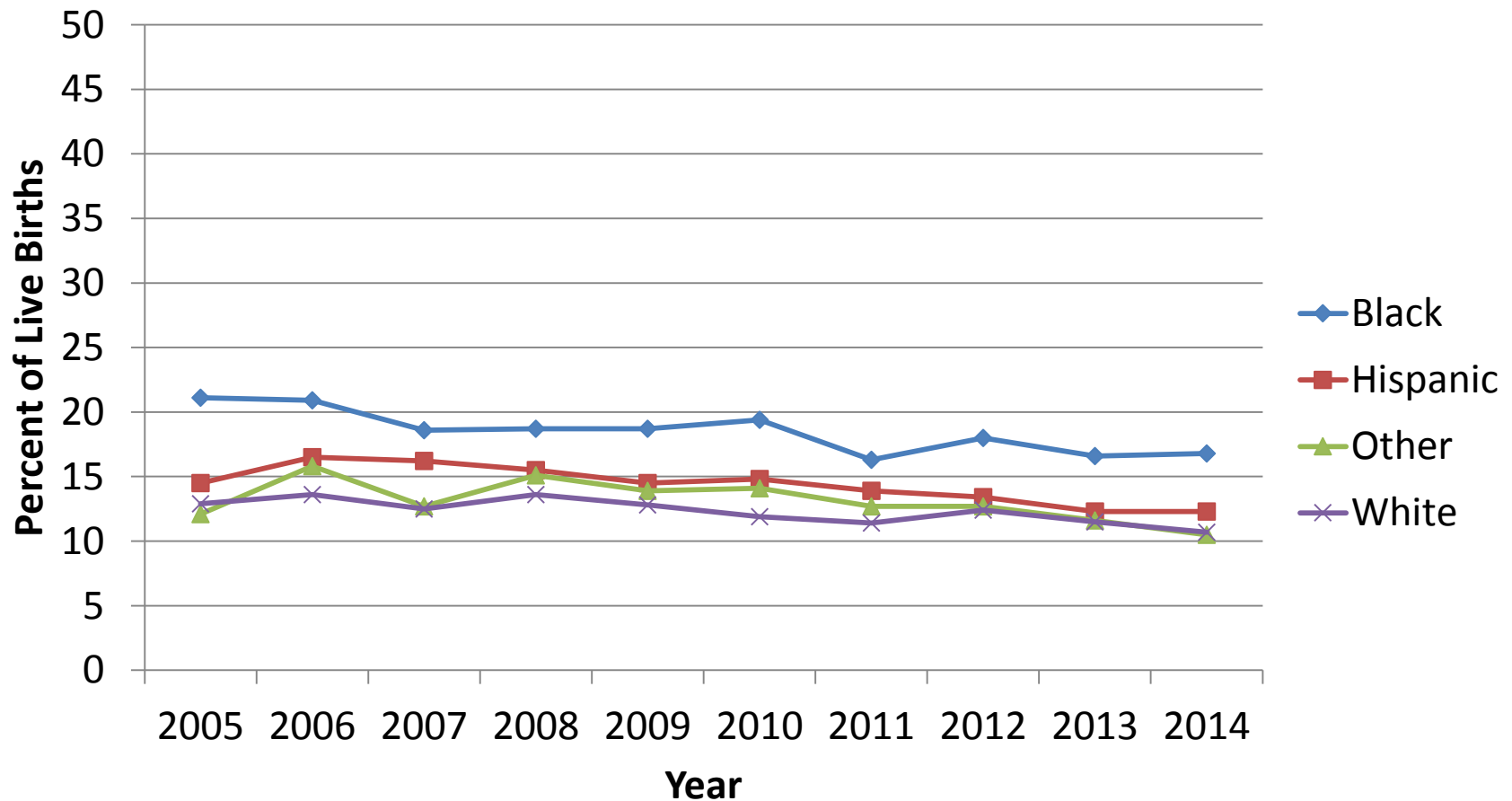


Adapted from <http://www.cdc.gov/socialdeterminants/FAQ.html>

Percent of Live Births Born Preterm (< 37 Weeks), Bexar County and Texas Using a Combined Estimate of Gestation, 2005 to 2014

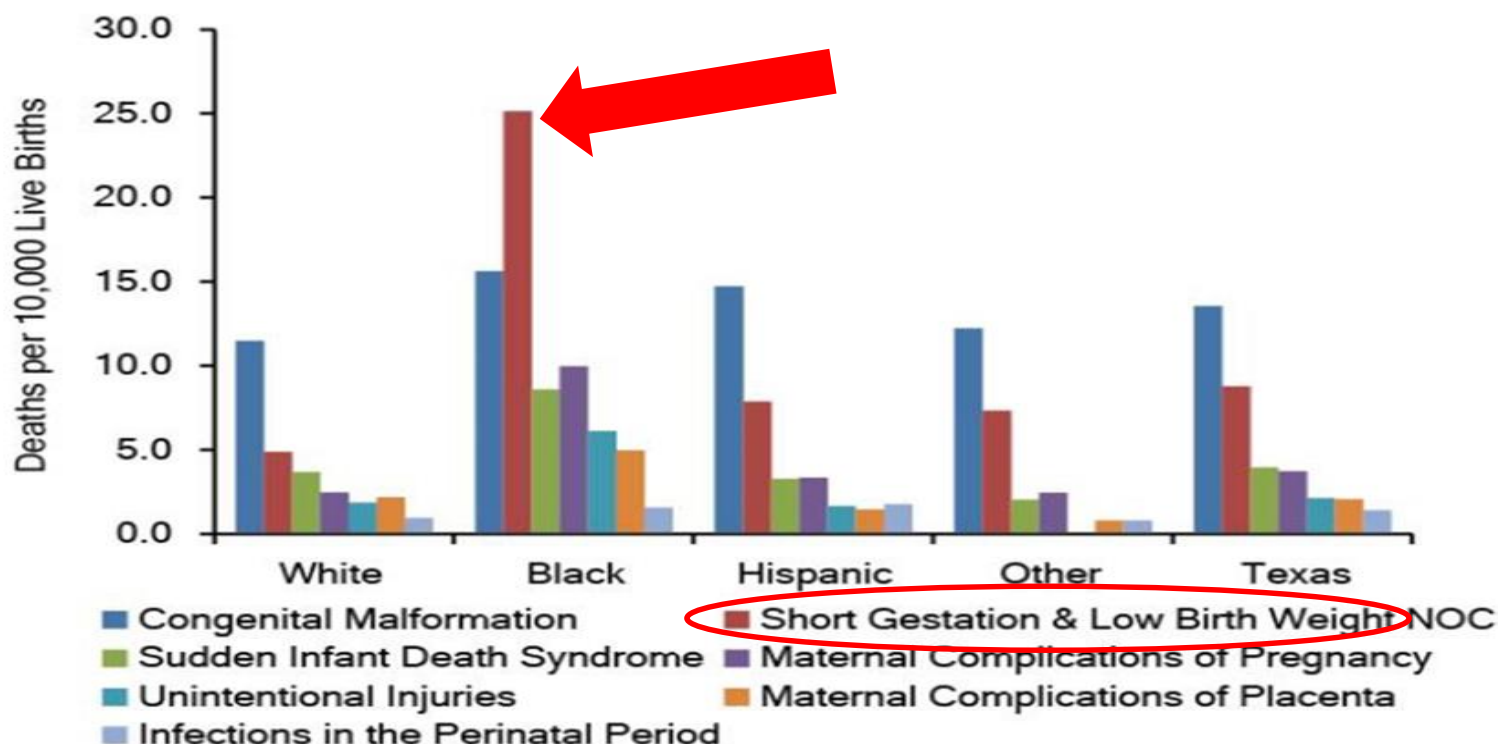


Percent of Live Births Born Preterm (< 37 Weeks) by Race/Ethnicity, Bexar County, 2005 to 2014



Connection to Infant Mortality

Leading Causes of Infant Death by Race/Ethnicity, 2013



NOC: Not otherwise classified

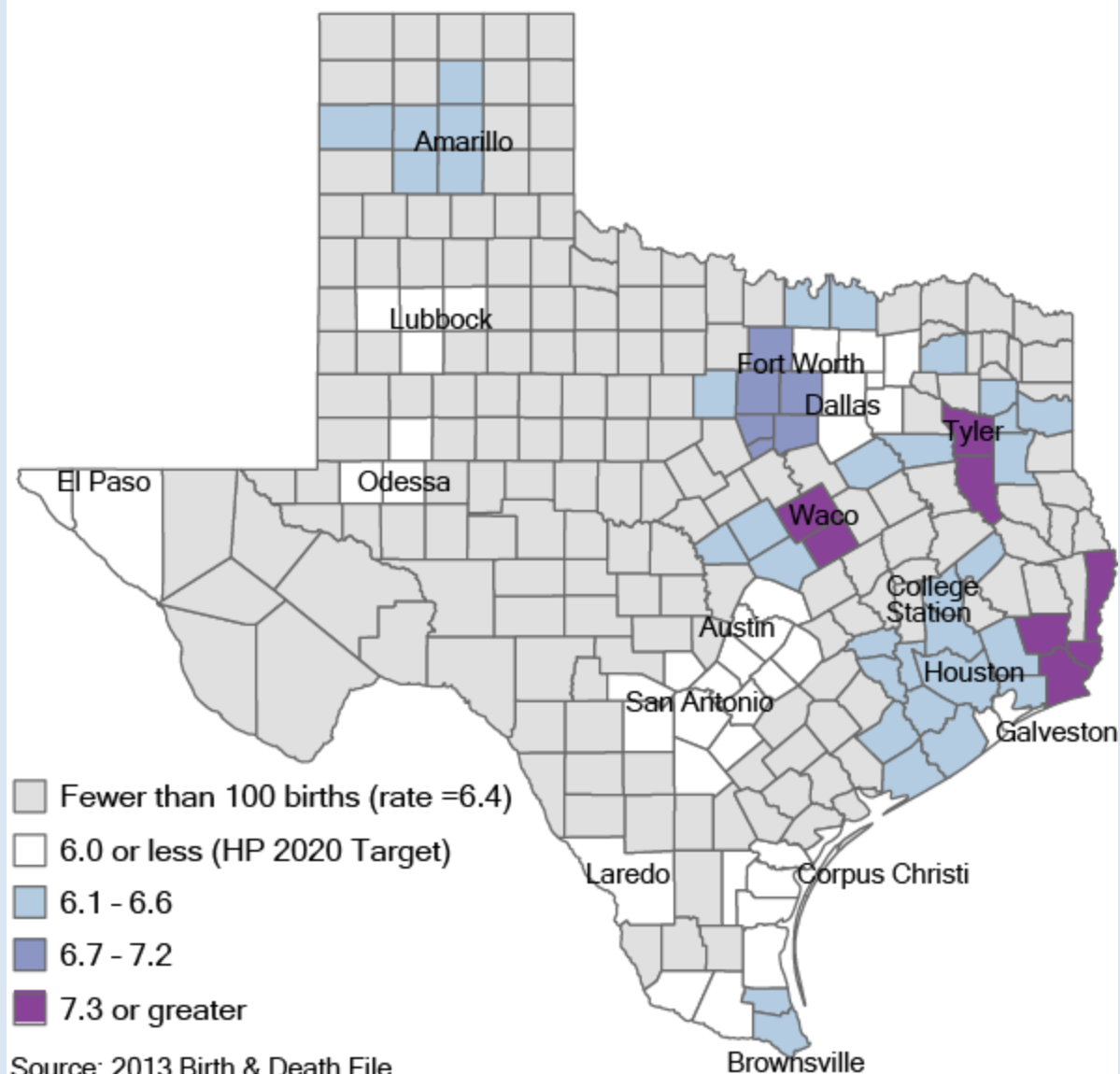
Source: 2013 Death & Birth Files

Prepared by: Office of Program Decision Support

Sept 2015

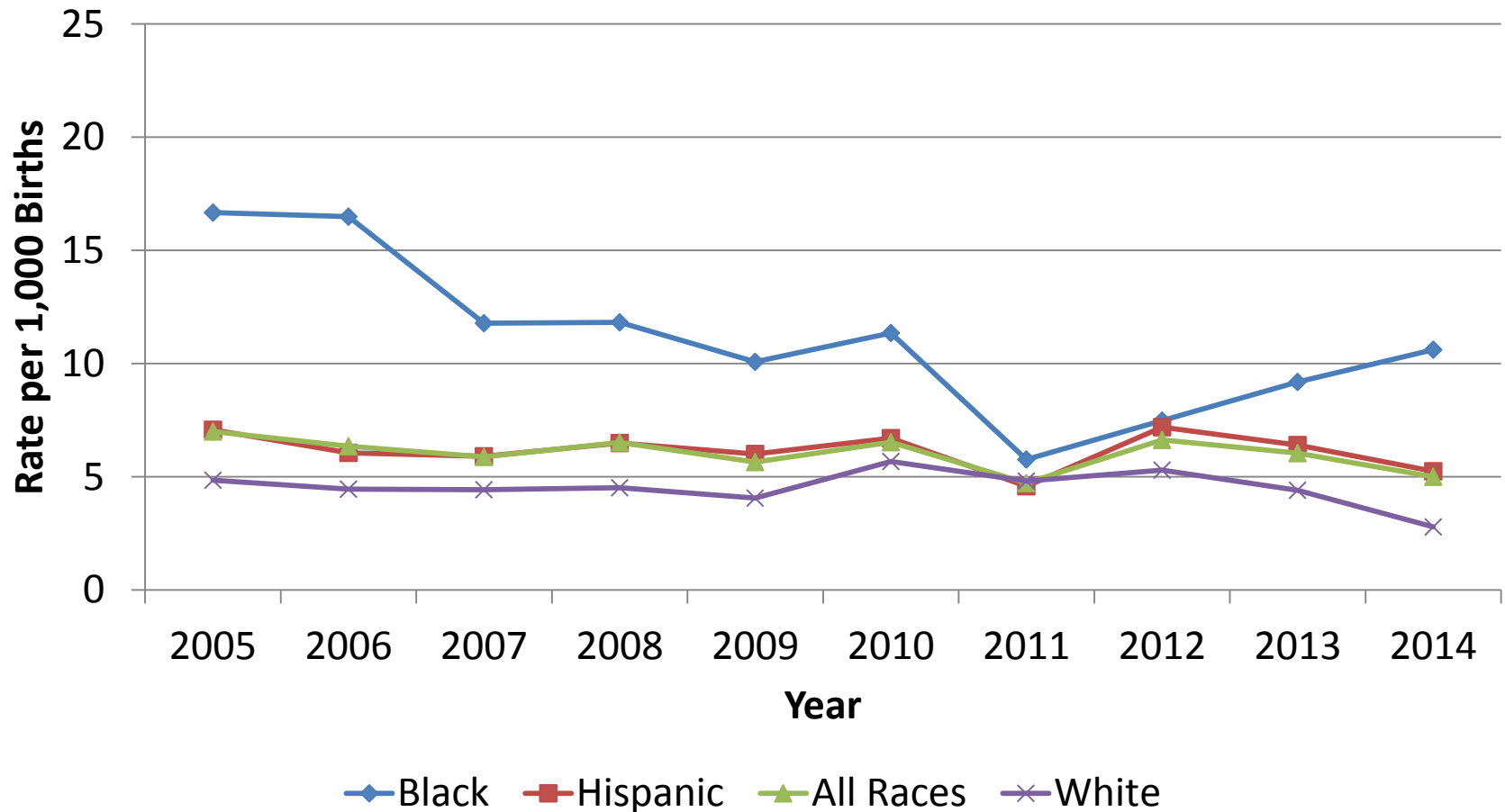
Graphic: 2015 Healthy Texas Babies Data Book

Infant Mortality Rate per 1,000 Live Births by Select Communities, 2013

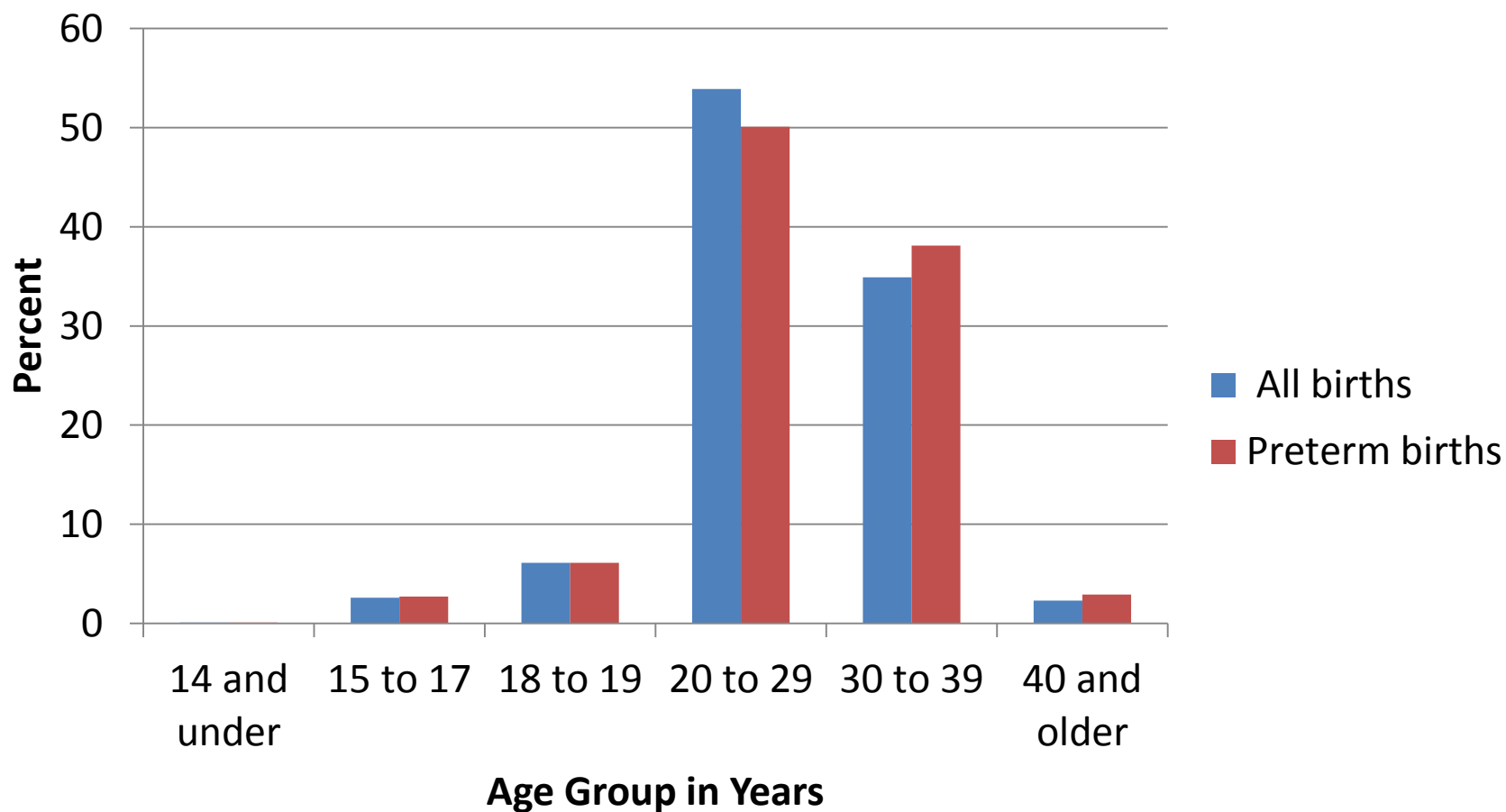


Source: 2013 Birth & Death File
Prepared by the Office of Program Decision Support
Sept 2015

Infant Mortality Rate per 1,000 Births By Race & Ethnicity, Bexar County, 2005 to 2014



Percent of Births by Age Group of Mother By Birth Type, 2014



Many Other Associated Factors

Behavioral

Smoking

Stress and depression

Alcohol abuse

Cocaine, heroin

Social, Personal, Economic

Insufficient prenatal care

Older maternal age

Teen pregnancy

Low socioeconomic status

African-American race

Medical

Prior preterm birth

Genital infection

More than 1 baby (twins, triplets...)

Underweight / Overweight

High blood pressure

Bleeding during pregnancy

Rapid repeat pregnancy

Short cervix

Gum disease

Many Other Associated Factors

Behavioral

Smoking

Stress and depression

Alcohol abuse

Cocaine, heroin

Social, Personal, Economic

Insufficient prenatal care

Teen pregnancy

Older maternal age

Low socioeconomic status

African-American race

Medical

Prior preterm birth

Genital infection

More than 1 baby (twins, triplets...)

Underweight / Overweight

High blood pressure

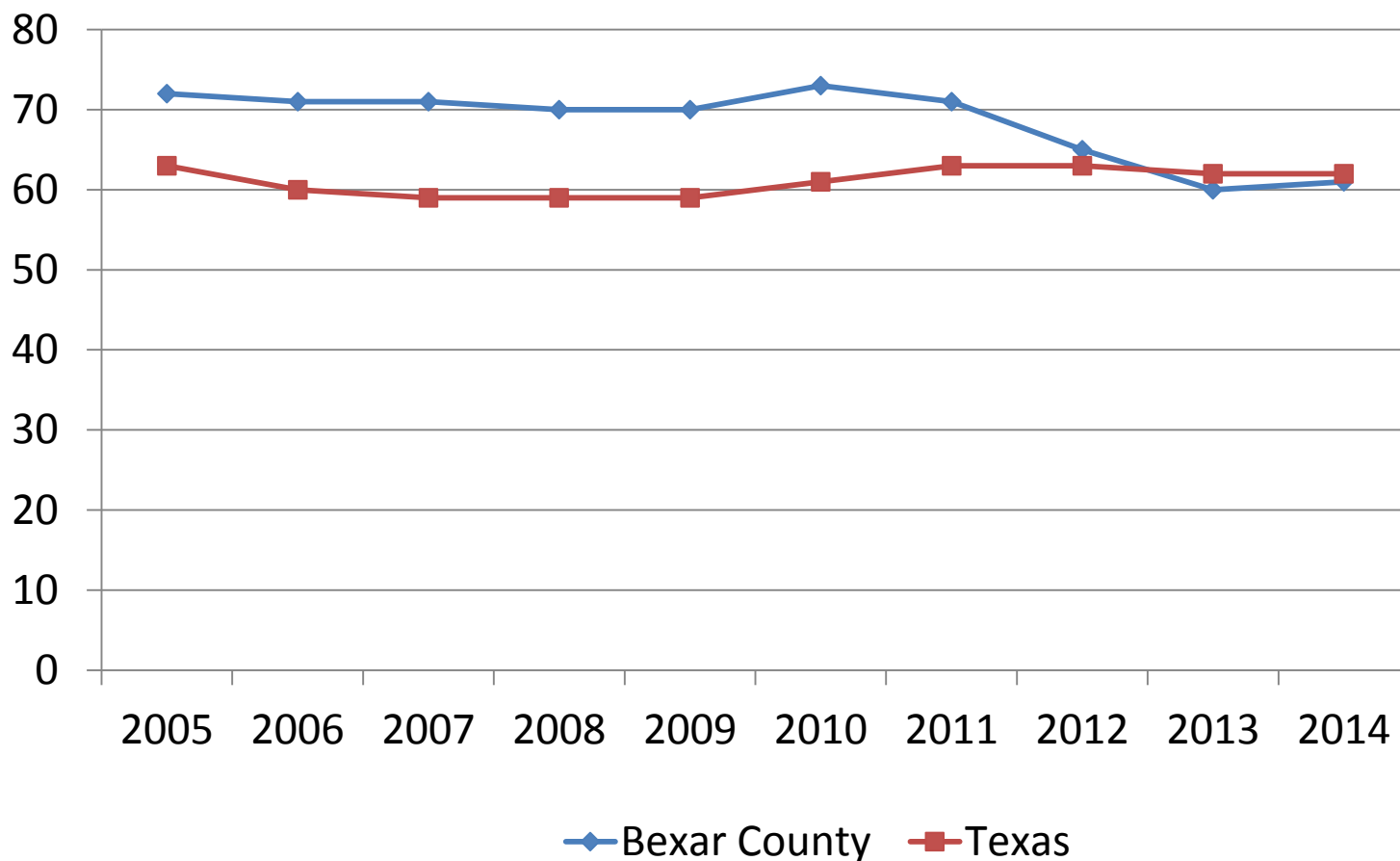
Bleeding during pregnancy

Rapid repeat pregnancy

Short cervix

Gum disease

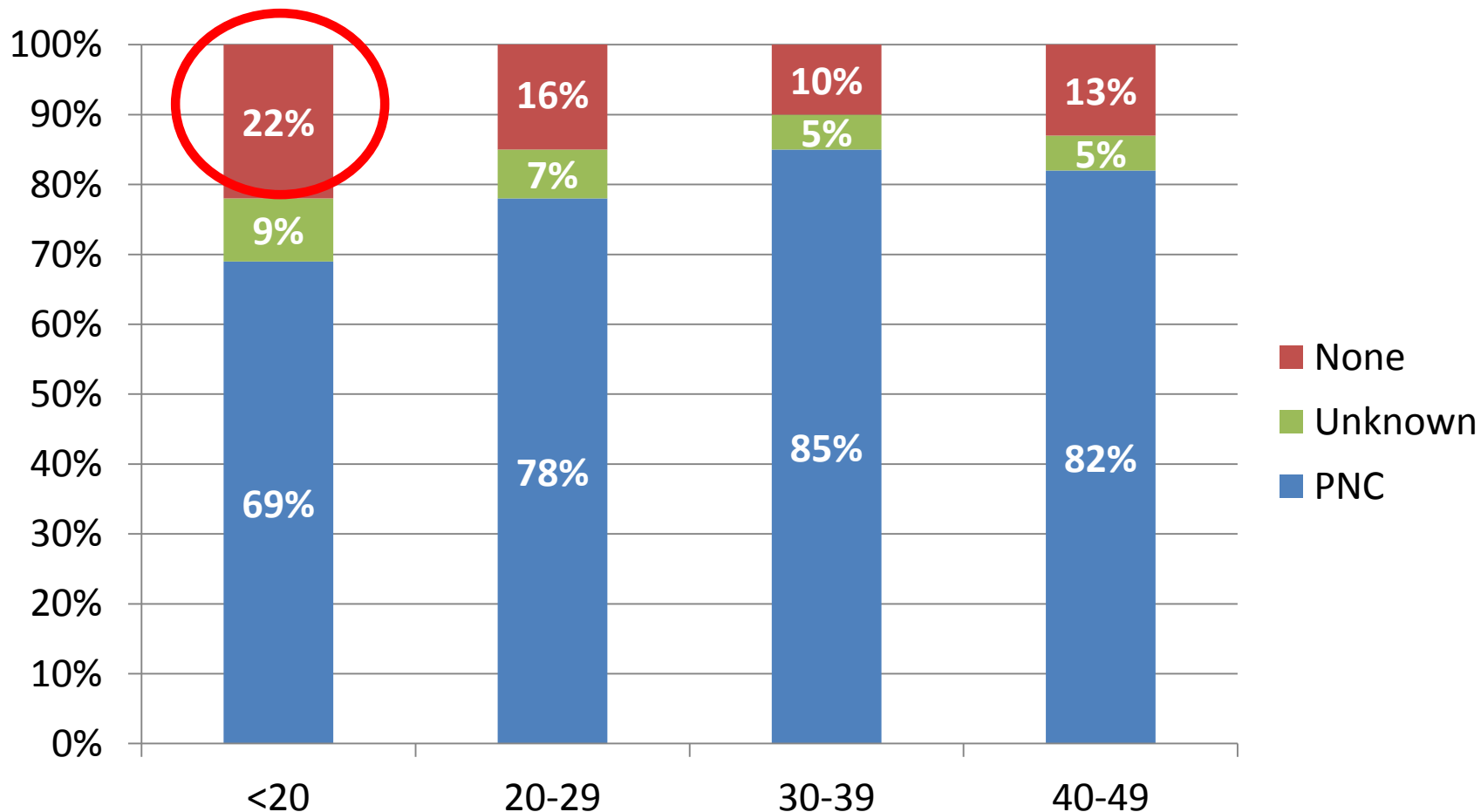
Women accessing care in 1st trimester: Bexar County vs. Texas, 2005-2014*



*2014 data are provisional and subject to change

Source: 2005-2014 birth files provided by the Texas Department of State Health Services, Center for Health Statistics, Birth Certificates

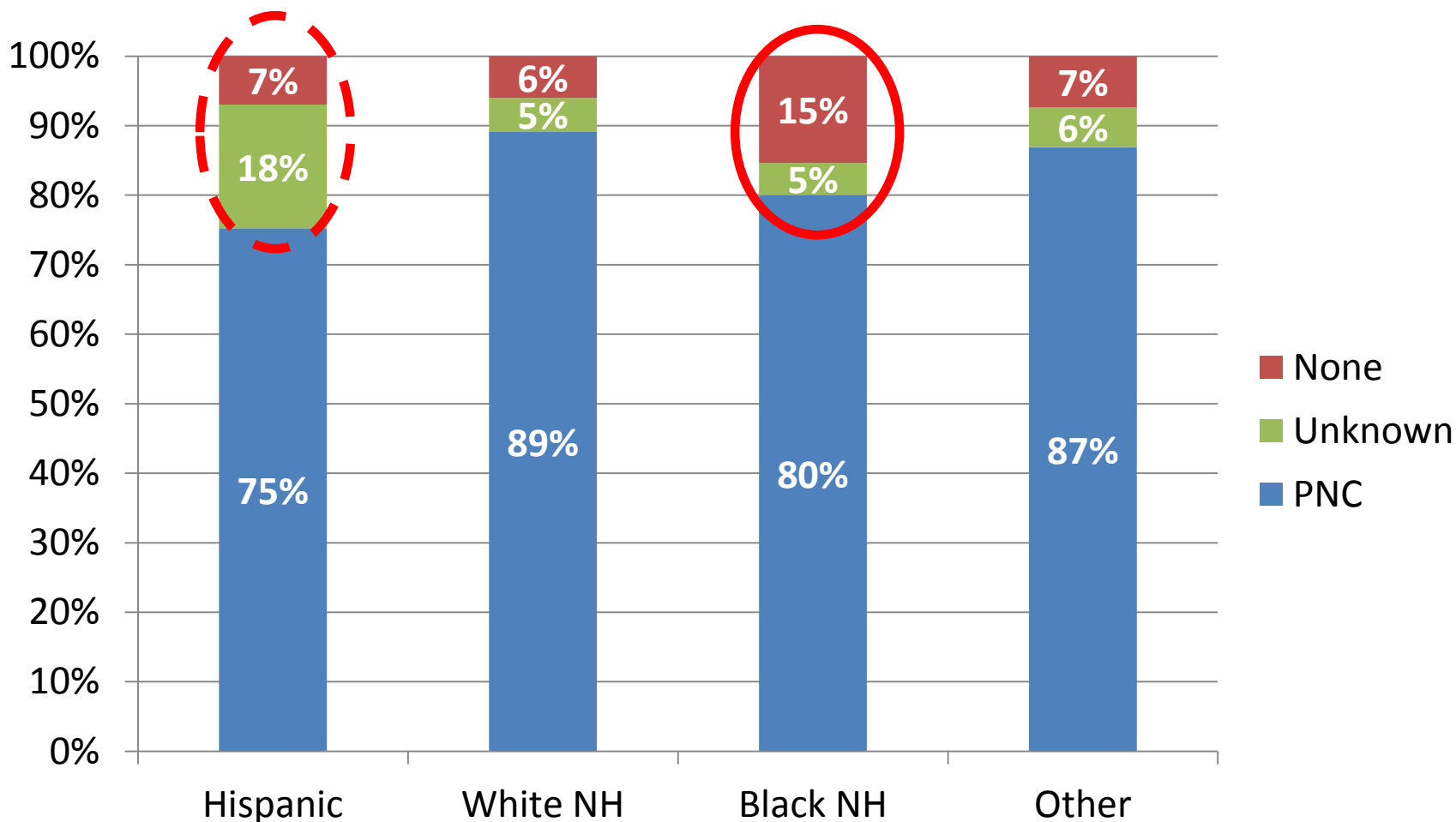
% Total Live Births by Prenatal Care Level, **By Age**, Bexar County, 2014*



*2014 data are provisional and subject to change

Source: 2005-2014 birth files provided by the Texas Department of State Health Services, Center for Health Statistics, Birth Certificates

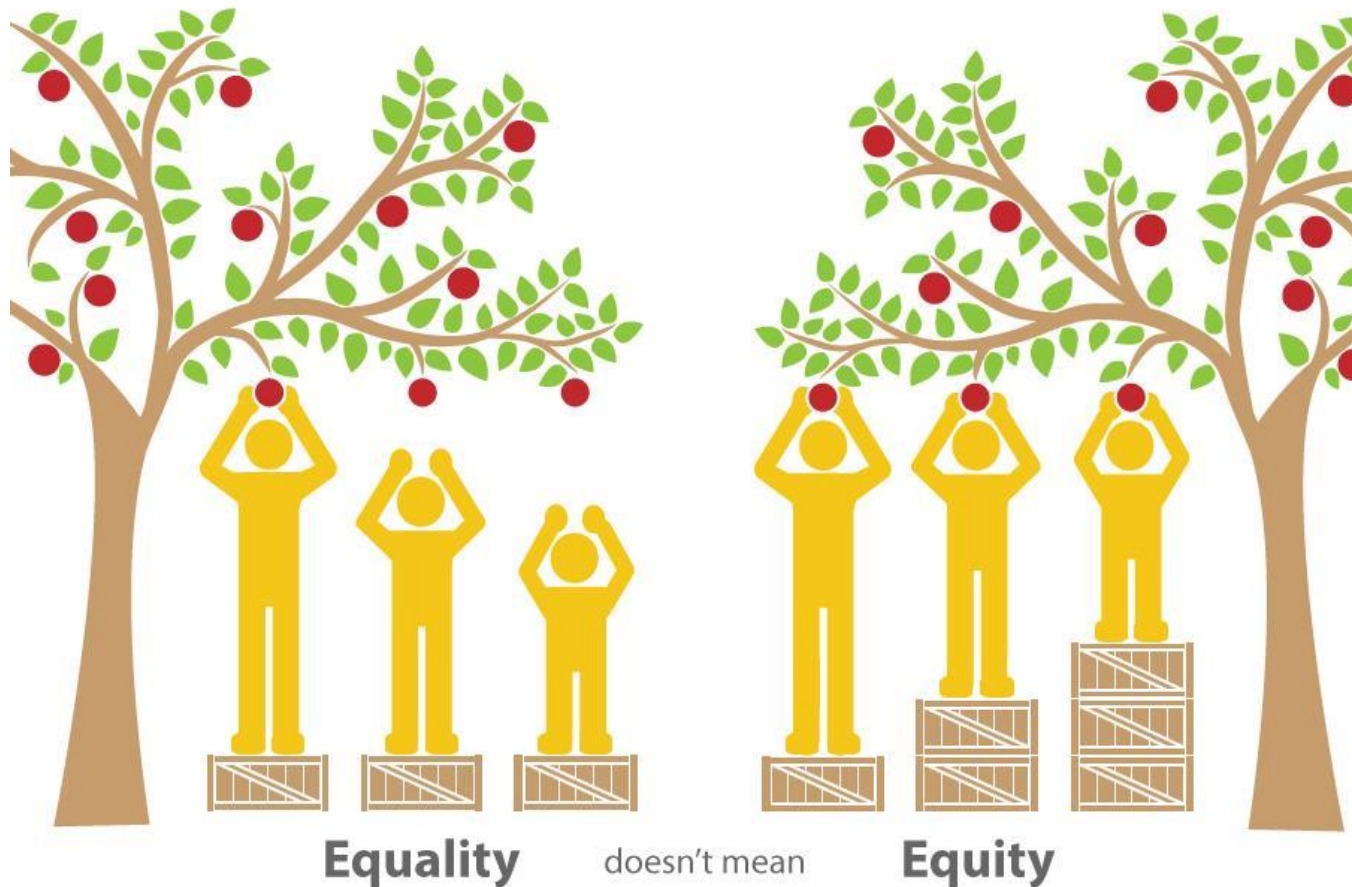
% Live Births by Prenatal Care Level, **By Race/Ethnicity**, Bexar County, 2014*



*2014 data are provisional and subject to change

Source: 2005-2014 birth files provided by the Texas Department of State Health Services, Center for Health Statistics, Birth Certificates

Public Health View



Moving Forward with Metro Health

- Backbone organization for Healthy Families Network
- Backbone organization for Fetal Infant Mortality Review group
- With March of Dimes: Early Entry Into Prenatal Care
- “Headline Indicators” in new Strategic Plan that overlap with prematurity prevention:
 - 1) Infant deaths (prematurity is single greatest contributor)
 - 2) First trimester pregnancy care (17 HP, cervical length...)
- Office of Health Equity

Thank You!

Data courtesy of:

- Rita Espinoza, MPH,
chief epidemiologist,
Metro Health
- John Berlanga, BS, MPA,
senior management
analyst, Metro Health



Photo: Lisa Krantz, *San Antonio Express-News*